



# Turn your Sustainability Goals into Action The JD Edwards Sustainability Framework

Het Zendstation, Lopikerkapel, November 13<sup>th</sup>



**Carolina Jiménez Fernández**

Cadran

Sustainability &  
Finance Consultant



**Mark Herwege**

Oracle

Principal Solution Engineer  
JD Edwards

# Agenda

- Introduction
- Sustainability: What and Why
- The JD Edwards Sustainability Framework
- Next Steps

# Why is it important? – What are companies expected to do?

**Growing pressure on natural resources and the visible side-effects of a growth-at-all-costs economic model.**

**Why change is needed**

**New regulations that aim to balance business performance, people's well-being and the health of the planet.**

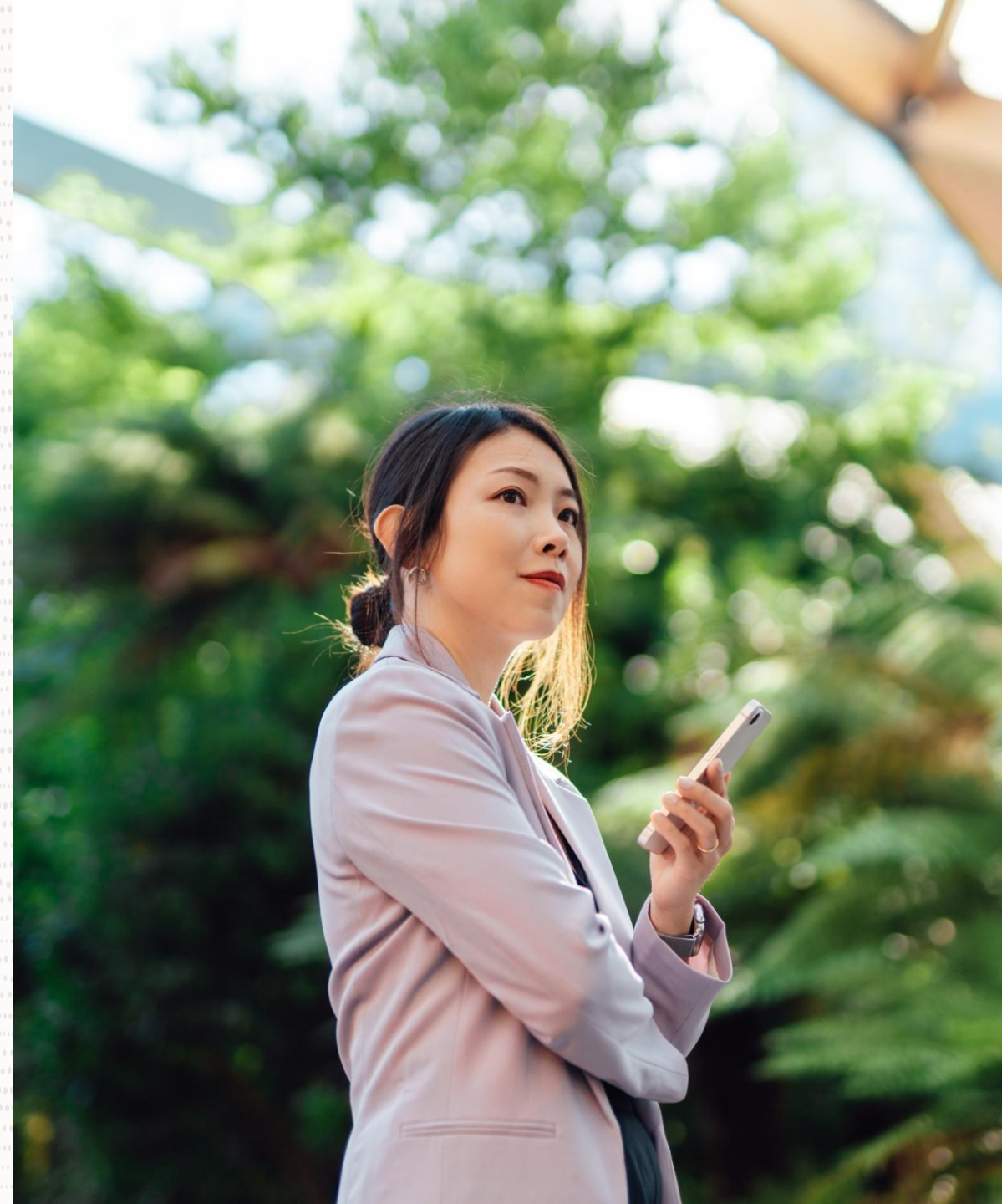
# The Sustainability Imperative

Climate change and resource scarcity demand immediate action

Customers and investors are prioritizing ESG performance

Regulatory pressure is rising globally (GRI, CSRD, SEC climate disclosure, etc.)

Competitive advantage through sustainability leadership



# Europe - ESRS, CSRD & ESG

What are we talking about ?



**European Sustainability Reporting Standards**

Requirements that specify how companies need to document and communicate their overall sustainability performance



**Corporate Sustainability Reporting Directive**

Bringing ESG reporting into the official legal reporting rules for companies in the EU



**Environmental, Social, and Governance**

A voluntary reporting model for companies to analyse and share their environmental, social and governance results

# USA - SEC - Federal Register

What are we talking about ?



**Securities & Exchange Commission**

US regulator that oversees financial markets and protects investors



**Federal Register**

Official daily journal where the US government publishes laws, rules, and public notices

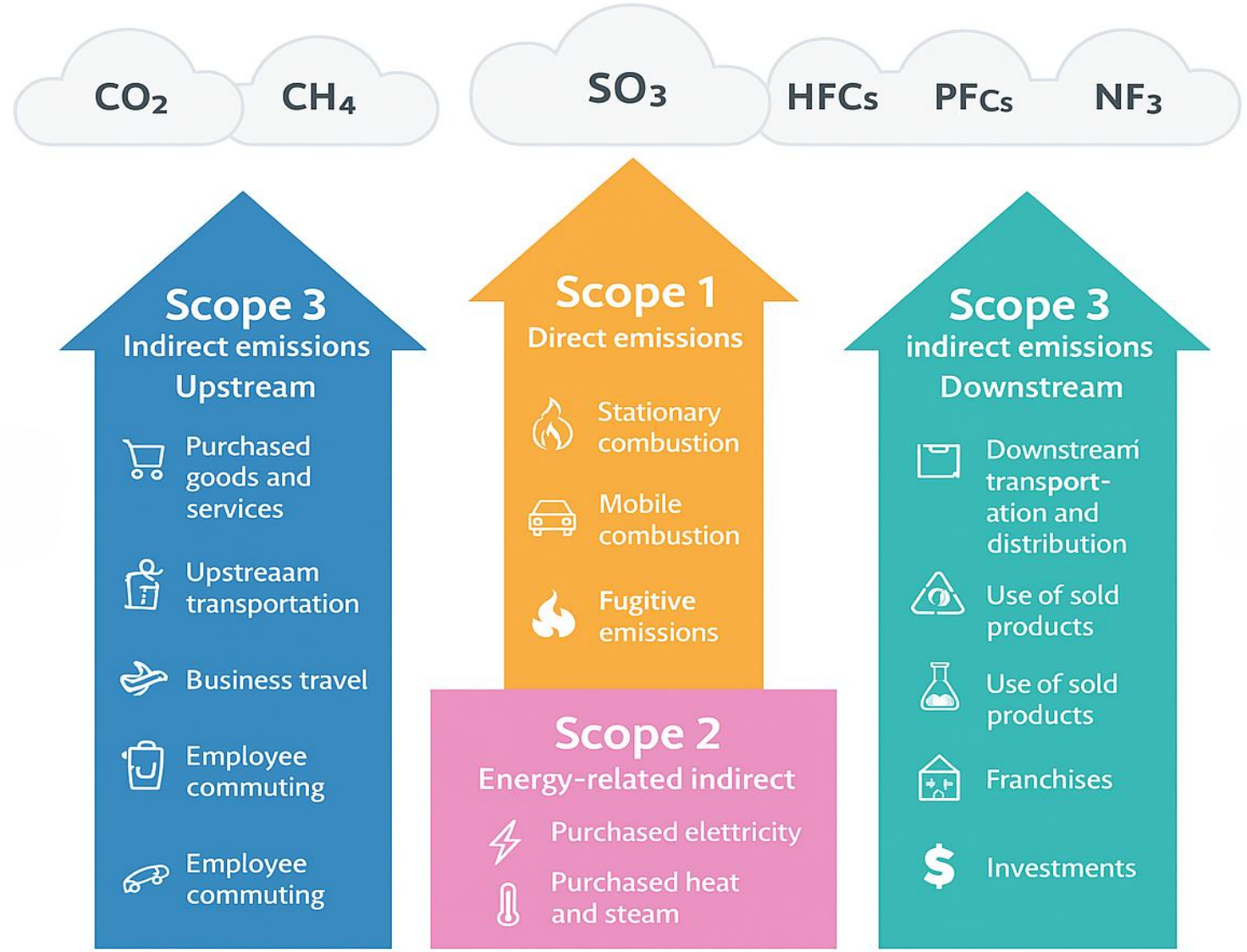


**Environmental, Social, and Governance**

A voluntary reporting model for companies to analyse and share their environmental, social and governance results



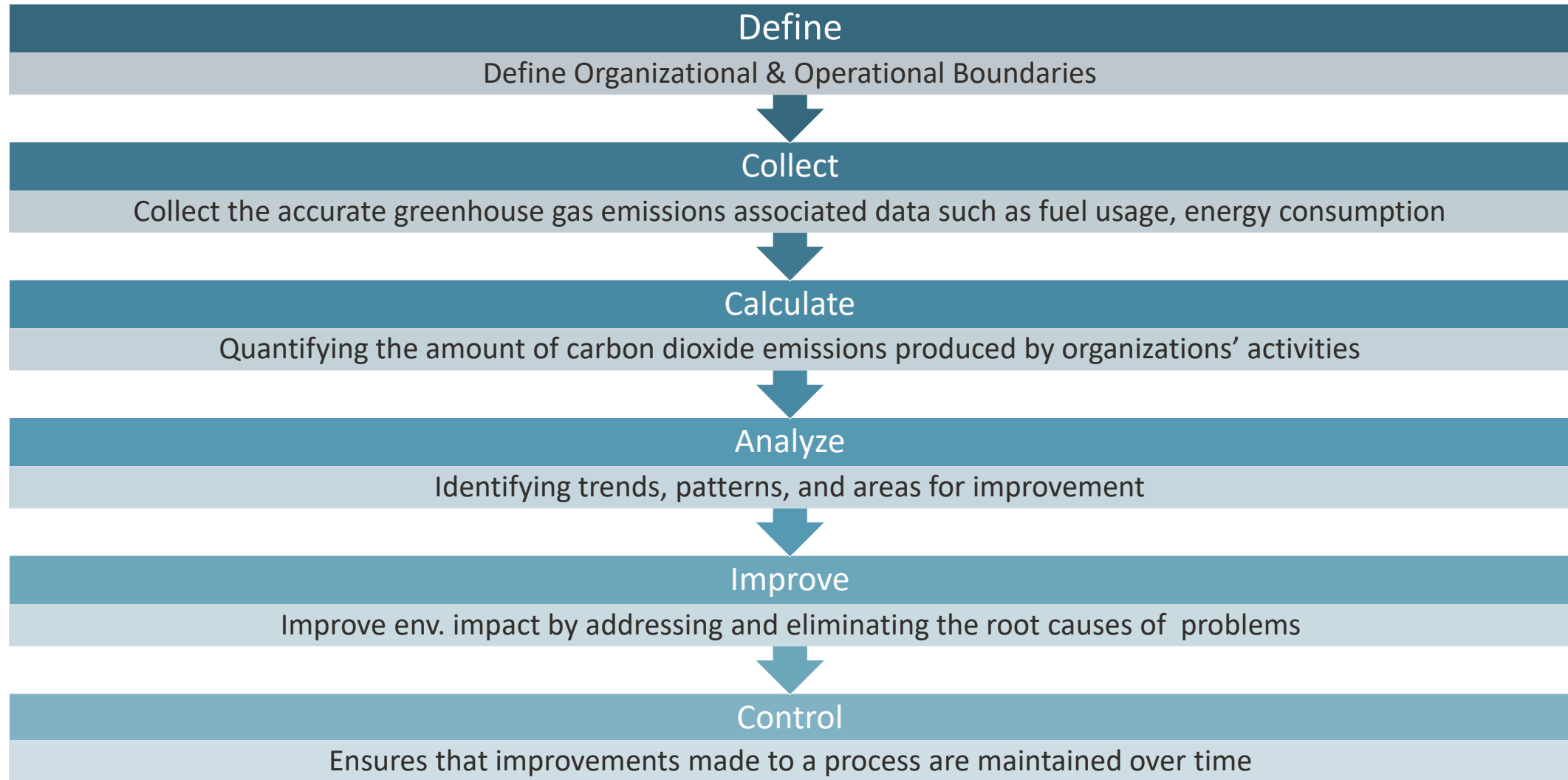
# Scope emissions



A man in a dark blue suit jacket, white shirt, and glasses is walking in a city street. He is carrying a black bag and holding a smartphone. The background shows a modern city with tall buildings and greenery. A teal text box is overlaid on the image, containing the text "How Do You Meet Your Sustainability Goals?".

# How Do You Meet Your Sustainability Goals?

# Steps involved in meeting your Sustainability Goals





The accuracy of emissions reporting is highly dependent on the quality of the **Data Collected**



# Challenges in Environmental Data Collection

Data spread across various business processes

Presented in different standards and formats

Manual consolidation can be error-prone process

Lack of accuracy and established process

**91%** business leaders are facing major challenges in making progress on sustainability and ESG initiatives

- **34%** collecting data from partners and other third parties
- **30%** lack of data being collected to track progress
- **28%** being able to pull data from multiple areas of the business

-ESG Global Study 2022

**47%**

still use spreadsheets for ESG data management

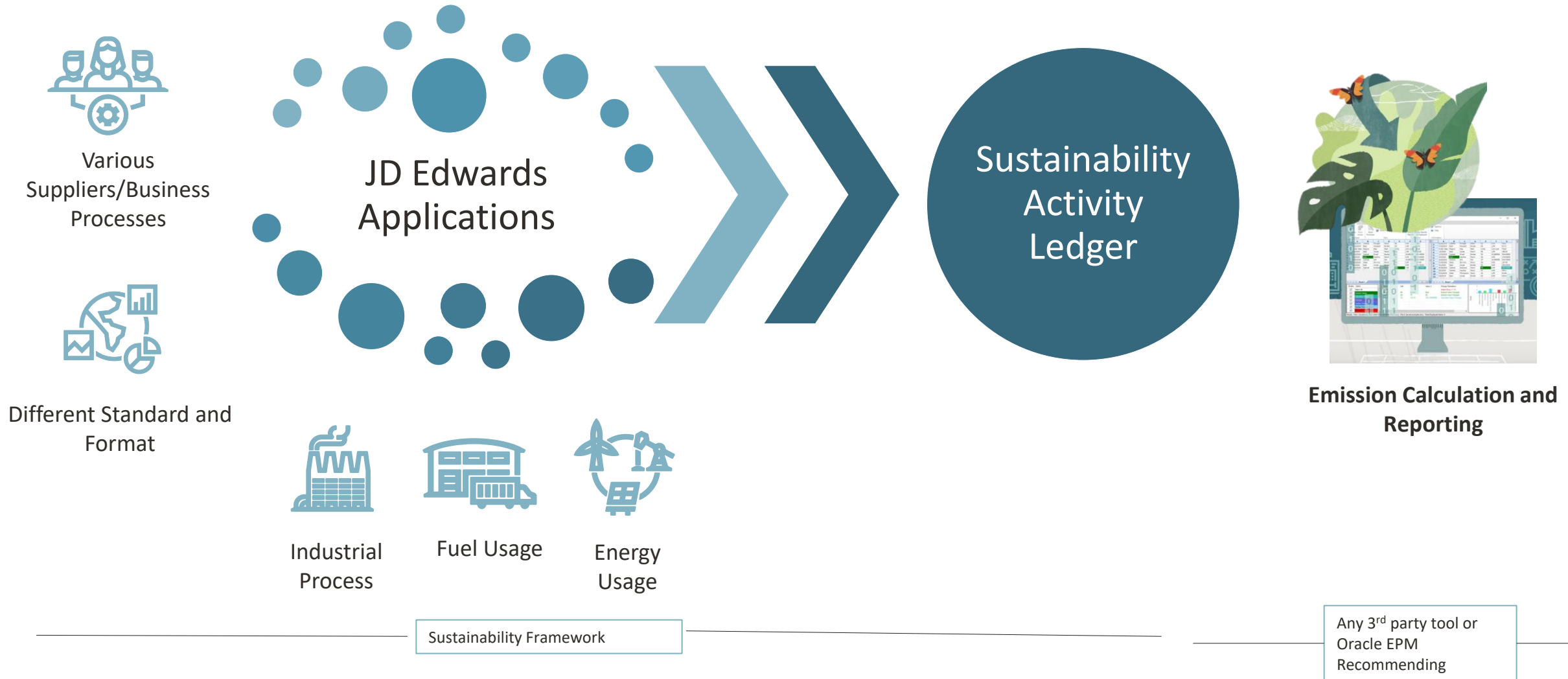
- ESG Today



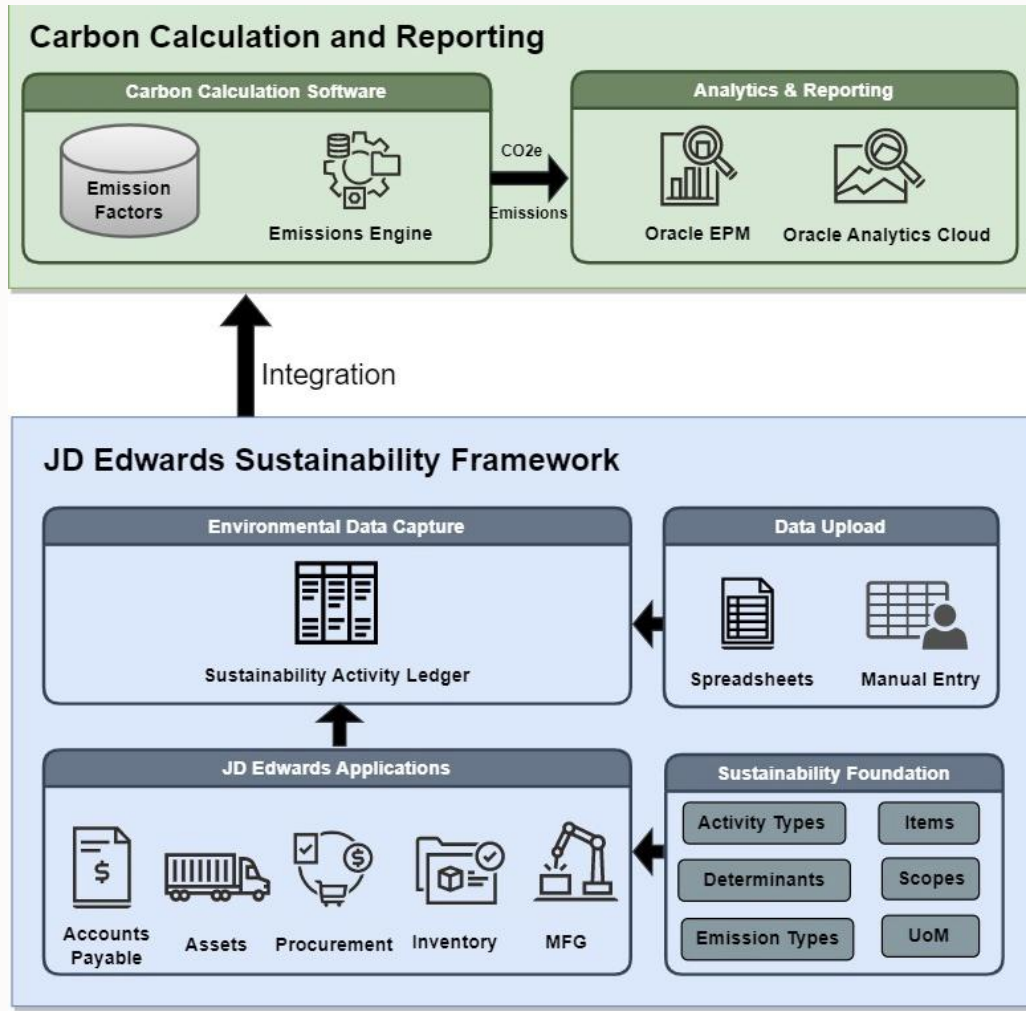
# How JD Edwards Turn Your Sustainability Goals into Actions?

# JD Edwards Sustainability Framework

Simplify and Streamline the Environmental Data Collection Process



# JD Edwards Sustainability Framework Architecture



- Provide Sustainability foundation by creating the reference data that are required to be captured for environmental reporting purposes
- Capture environmental data from various JD Edwards applications
- Store the environmental data as activity records in Sustainability Activity Ledger application
- Ability to enter and modify the activity data directly in the Sustainability Activity Ledger application
- Use JD Edwards in-built capabilities to import and export the environmental data



# Carbon Calculation and Reporting



Carbon calculation varies by country, industry, and other relevant factors. Therefore, it is crucial to integrate a suitable computational and reporting tool.

# JD Edwards Sustainability Framework Integration with EPM

Environmental Data Collect and Manage

JD Edwards Sustainability Framework



Emissions Calculation and Reporting

Recommending Oracle EPM for Sustainability

## EPM for Sustainability Framework

- Integrate for carbon calculation and reporting
- Pre-built KPI's, dashboards and reports
- Support all ESG Frameworks – CSRD, TCFD, ESRS, IFRS, GRI

## EPM Integration Methods

- Flat File Upload
- EPM Integration Agent

# Demo

- Let's explore the JD Edwards Sustainability Framework
  - Capture Scope 1 and Scope 2 data
  - Integration with EPM for Carbon Calculation and Reporting



## Business Use Case

An automotive components manufacturer produces a wide array of products, including engine parts, suspension systems, and electronic components for vehicles.

The company uses **natural gas** for heating and production processes – **Scope 1 Stationary Combustion**

**Gasoline and Diesel** for transportation activities  
- **Scope 1 Mobile Combustion**

Utilizes various energy sources, including **electricity from the grid** to power its operations  
- **Scope 2 Purchased Energy**

Committed to reducing their environmental footprint which occur during the production, transportation, and storage

- Data Fragmentation
- Manual Data Entry
- Resource Intensive



**Administrator**

---

**Welcome**

Welcome to your EPM for Sustainability Solution

---

Activity Recent Favorites


**1** Announcements

---

 Tour



Controller



Scope 1



Scope 2



Scope 3



Reporting



Planning



Application



Tools



IPM



Financial Reports



Documents





## Key Capabilities

Addresses the challenges of environmental data collection

One-time setup of environmental reference data

Provides environmental data management capabilities

Provide the ability to capture Scope 1 and Scope 2 data

Offers the flexibility to create custom activities

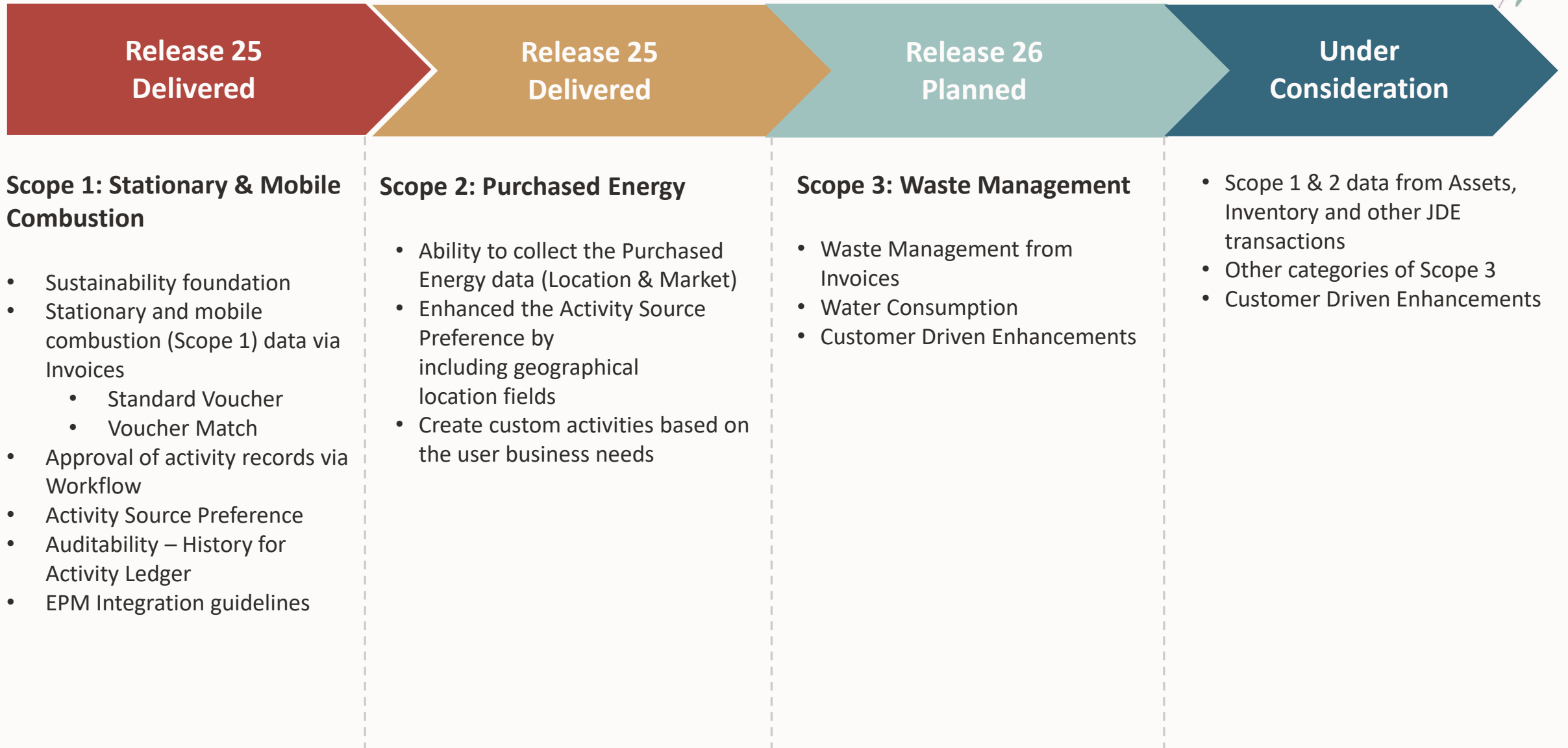
Empowers the Sustainability Manager to review the activity records

Automatically populating the Activity Sources based on the preconfigured setup

Integrate with third-party tools for carbon calculation and reporting



# JD Edwards Sustainability Framework – Roadmap





## JD Edwards Early Adopters

- Heightened awareness across Support, Development, and Product Management teams
- Expedited SR/Bug Resolution
- Opportunity to provide feedback on future enhancements
- Collaborative relationship with JD Edwards Product teams

# LearnJDE.com

The screenshot shows the LearnJDE.com website homepage. At the top, the 'LEARNJDE' logo is on the left, and navigation links for 'Applications', 'Tools and Technology', and 'Resources' are in the center. Search and user profile icons are on the right. The main content area features three promotional banners: 1) 'Announcing JD Edwards EnterpriseOne Release 25 January 2025' with a woman in a white blazer. 2) 'Register for BLUEPRINT 4D June 9 - June 13, 2025 Las Vegas, NV' with a night cityscape and fountain. 3) 'Premier Support for EnterpriseOne Extended through at least 2036!' with a woman in a yellow shirt holding a phone. Below the banners is an orange navigation bar with icons and labels for 'Roadmap', 'Announcements', 'Product Catalog', 'JDE and SaaS', and 'JDE Documentation'. A small progress indicator is visible below the third banner.

LEARNJDE Applications Tools and Technology Resources

Announcing JD Edwards EnterpriseOne **Release 25**  
January 2025

Register for **BLUEPRINT 4D**  
June 9 - June 13, 2025  
Las Vegas, NV  
Share your expertise, expand your reach and build connections

Premier Support for EnterpriseOne Extended through at least **2036!**  
[Learn More](#)

Roadmap Announcements Product Catalog JDE and SaaS JDE Documentation

# Stay Connected!



Quest Oracle Community



The JDE Connection



LearnJDE



JD Edwards Professionals  
JD Edwards Partner Group



OracleJDEdwards



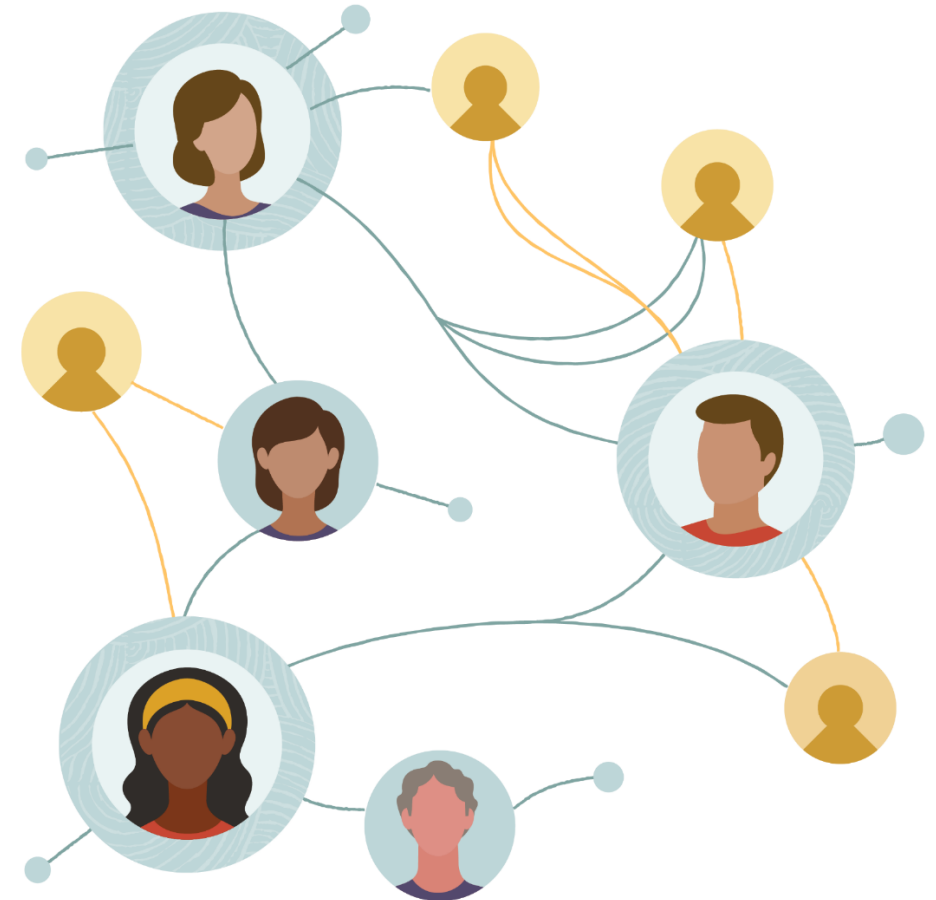
My Oracle Support



Oracle JD Edwards



OracleJDEdwards



# Q&A

# Thank you!

**Together, we will relentlessly improve and innovate.**

**Together, we will optimize and transform how you use Oracle applications and technologies.**