

Oracle Applications Unlimited Tour

OBUG JD Edwards
Update 2025
Utrecht, Netherlands
November 13, 2025



JD Edwards Roadmap

Apply, Adopt and Accelerate
your Digital Transformation

November 13, 2025

Paul Houtkooper

Vice President,
JD Edwards Development



INFOCUS Conference Recap

- Approximately 700 total attendees and 350 customer attendees
- 36 JD Edwards led sessions, 6 JDE Workshops and 11 SIG (Special Interest Group) Meetings
- 220+ Total Sessions
- 75+ JD Edwards partner sponsors



**Sometimes,
great ideas
are written
on a simple
*napkin.***



The pulse of the JD Edwards Ecosystem

Relentlessly Improving and Innovating

The measures of continuous innovation



32 releases and 1000+ enhancements on JD Edwards 9.2

1000+ JDE customers are celebrating



**Happy 10th birthday
Orchestrator**

Join JD Edwards and see the world



A global solution used in 111 countries worldwide

Perfect Pairing



820+ JD Edwards customers using Oracle SaaS and/or Oracle Cloud Infrastructure

Get it on the action



600+ JDE users attended Oracle's Orchestrator Workshops in Europe

Continuous Learning



15000+ downloads of The JDE Connection podcast



**JD Edwards Roadmap:
Leading you to the future!**

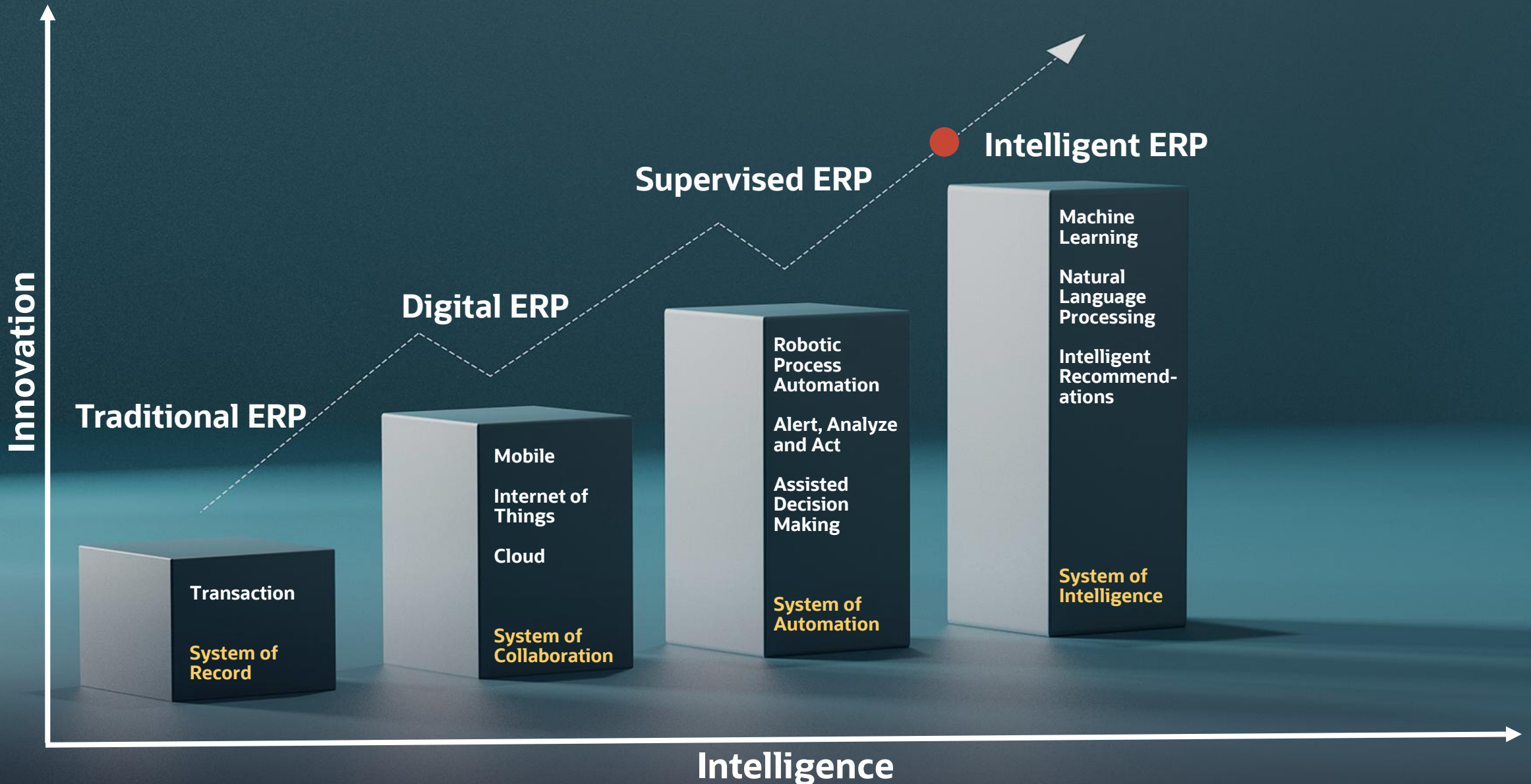
20



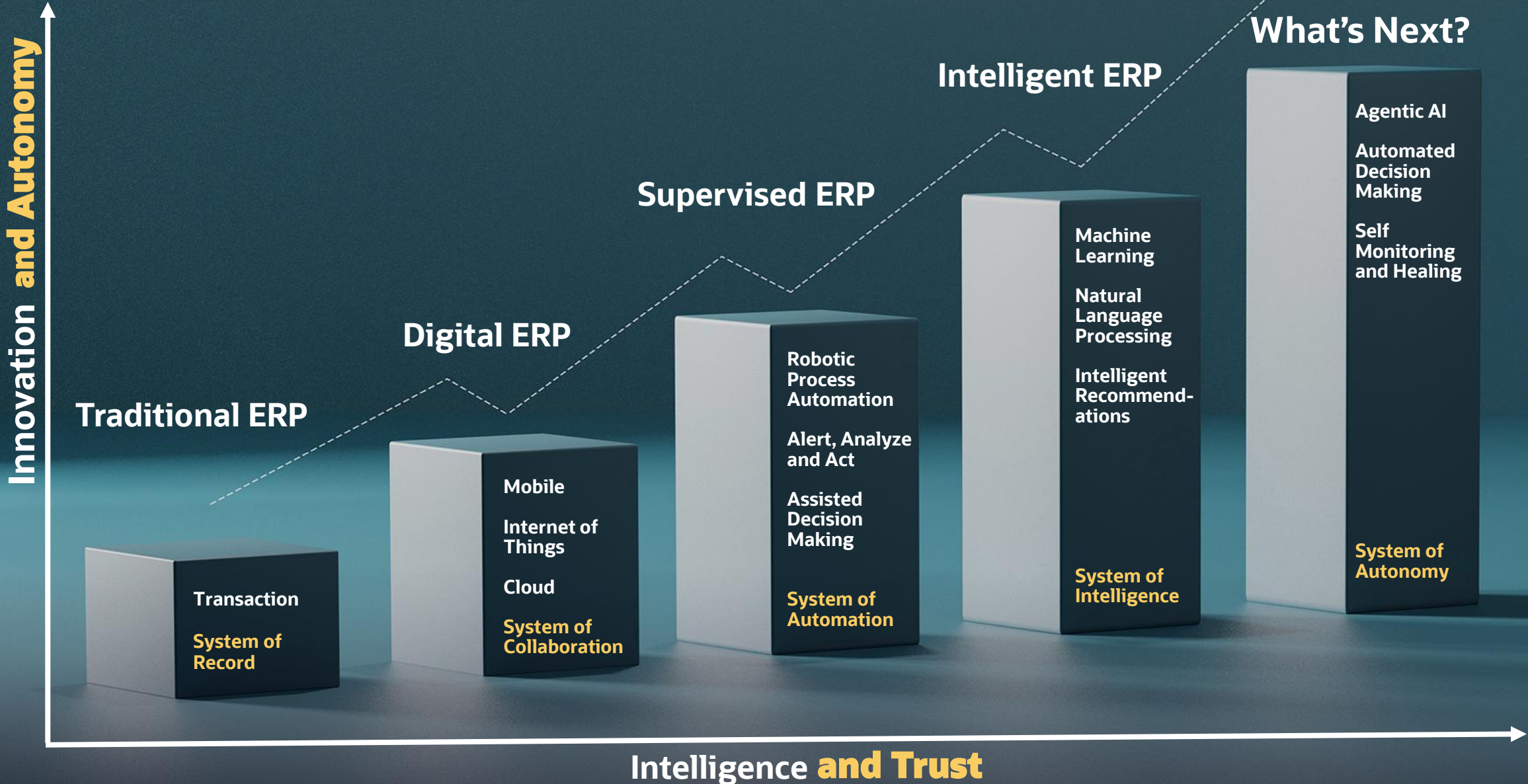
**A rolling 10-year window
of Premier Support for
EnterpriseOne 9.2.**

Extended to *at least* 2036!

Our ERP Vision from 2018... **Where are you now?**



Our ERP Vision in 2025... **Are you Ready?**



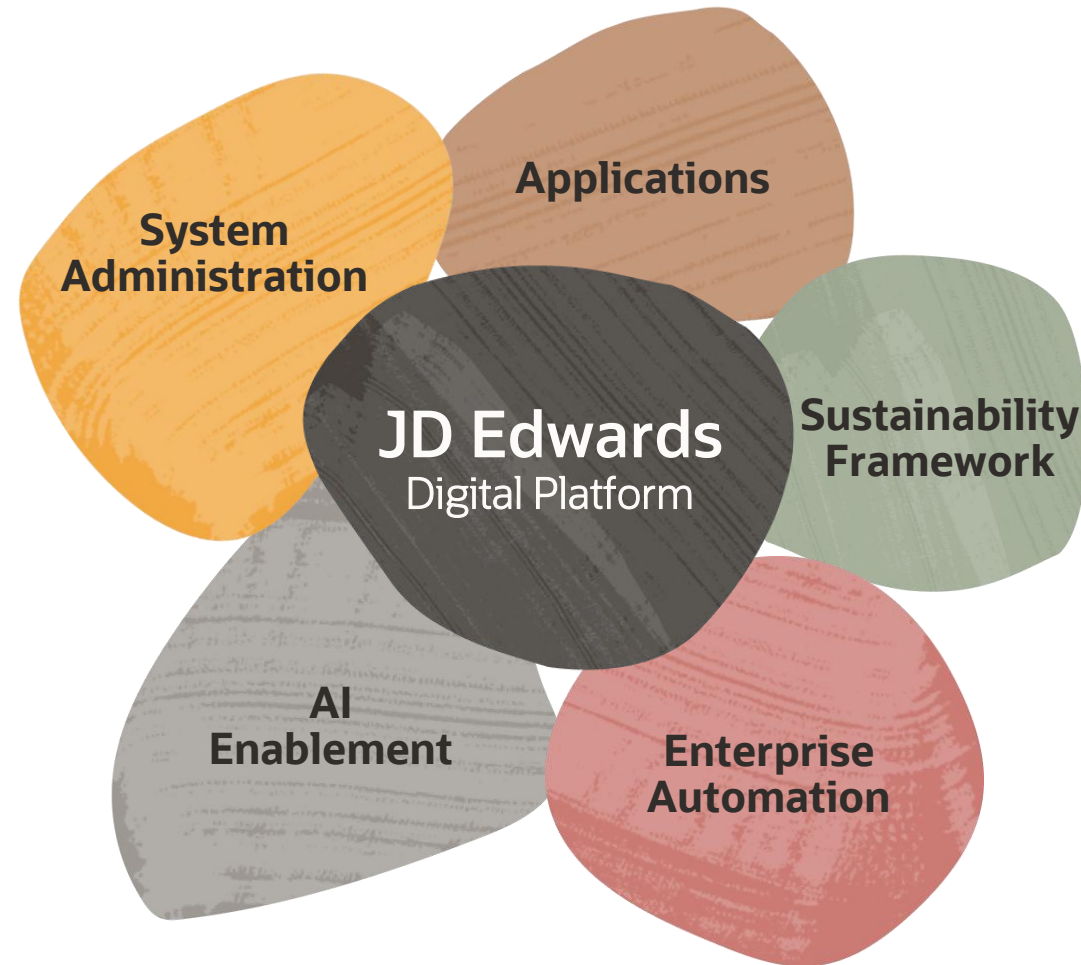
**Are you using JD Edwards like
2005 rather than 2025?**



2005

JD Edwards Product Strategy

Creating, protecting, and harnessing your digital gold



The Oracle logo is displayed in a bold, red, sans-serif font. The background of the slide features a light blue gradient with abstract geometric shapes, including hexagons and curved lines, suggesting a modern and technological theme.

ORACLE

JD Edwards EnterpriseOne 9.2

Release 26

Automate. Optimize. Transform.

Applications Update 26
Tools Release 9.2.26.x

Digital Platform

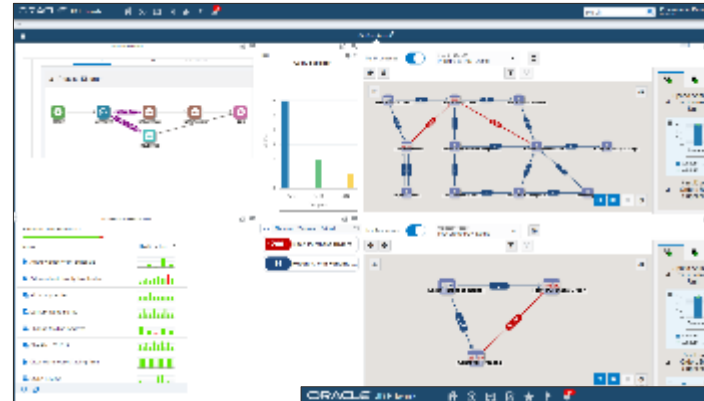
Release 26
Tools 9.2.26.0

Italics = Planned

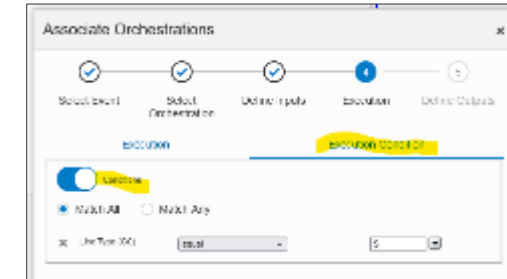
Release 26 Empowering Users. Evolving Technologies

- **Process Automation**
 - Enterprise Automation Dashboard
 - Detailed Debugging of Orchestration Form Requests
 - Debug Orchestrations with File Inputs
 - *User-defined process models & metrics*
- **User Experience**
 - Notifications on EnterpriseOne Page Tiles
 - Widgets with User Input
 - *Widgets in CafeOne*
- **Enterprise Integration**
 - *E1 Channel to Oracle Digital Assistant*
 - *Oracle Guided Learning for Orchestrator Studio*
- **No Code/Low Code**
 - Form Extensions for Power Edit Forms
 - Conditional Launch of Orchestrations
 - *Form Extensions for Power Edit Forms: Data*

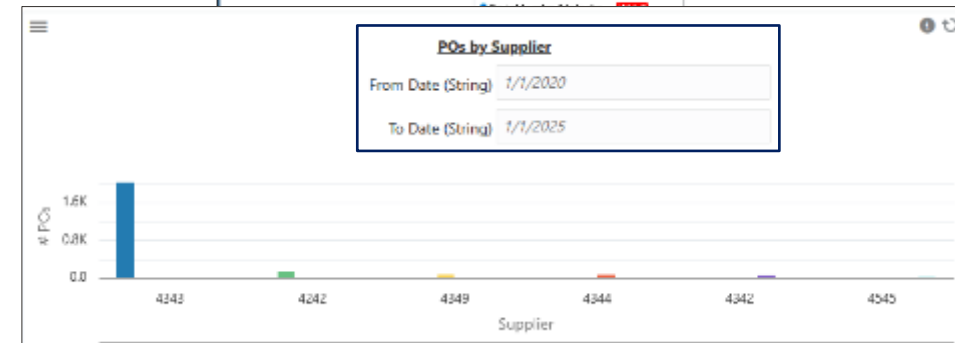
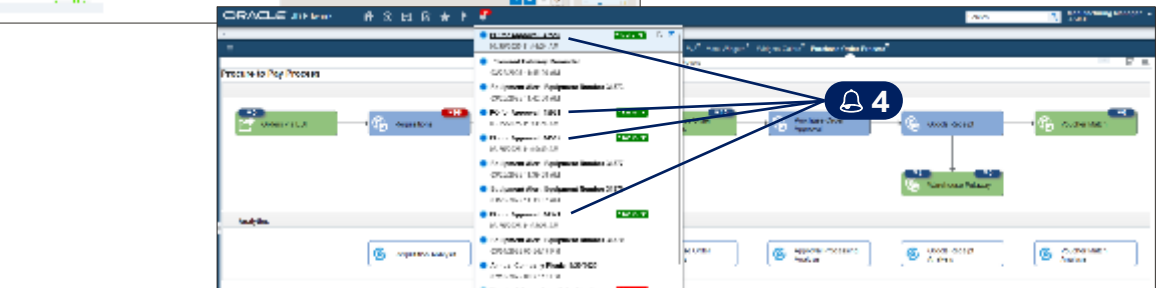
Enterprise Automation Dashboard



Conditional Launch of Orch



Notifications on E1 Page Tiles



Widgets with User Input



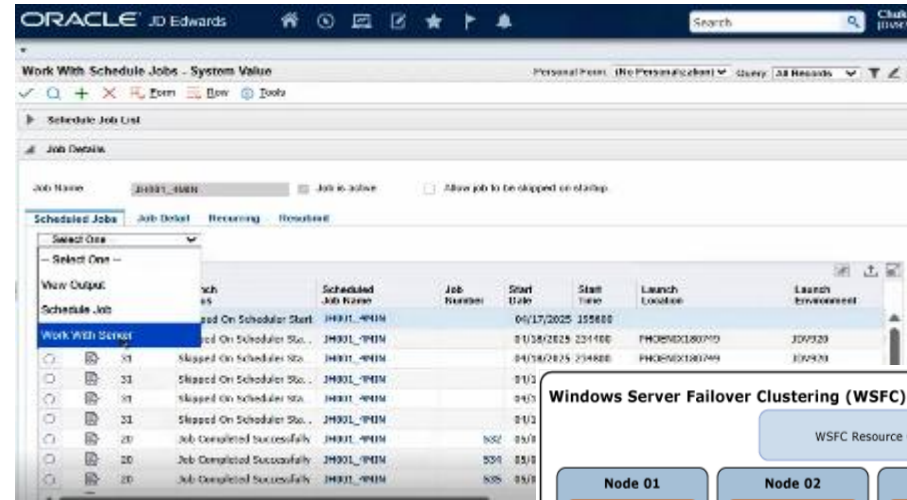
System Administration

Release 26
Tools 9.2.26.0

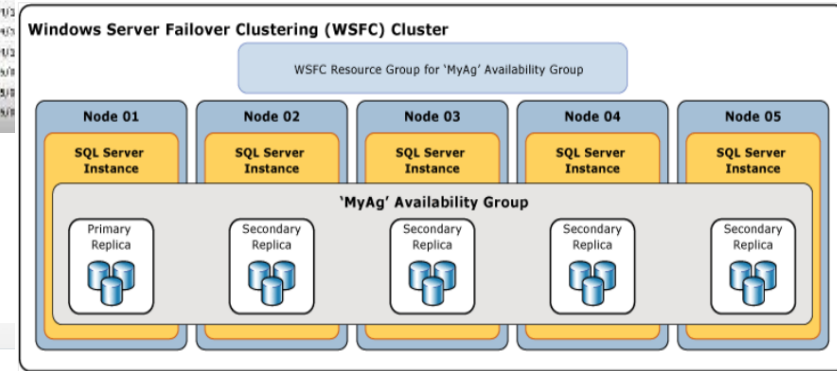
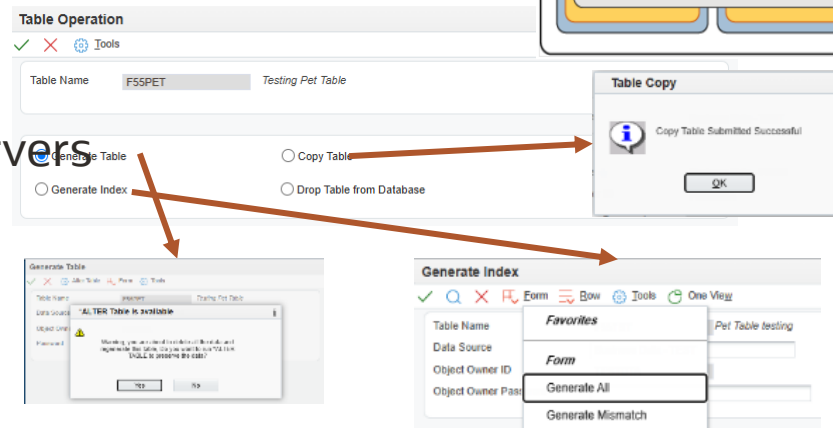
Release 26 Empowering Users. Evolving Technologies

- **Enterprise Class Infrastructure**
 - Oracle Database 23ai Support
 - Microsoft SQL Server Clustering Support
 - Oracle Analytics Server 25 Certification
- **Predictive Patching & Deployment**
 - JDE Update Manager: Language Updates
 - Move & Improve Migration/Update Toolkit
- **Effective Run & Maintain**
 - Web Scheduler+
 - Web OMW: Table Operations
 - UDO Security Performance Improvements
 - Elongated Media Object URL Length
- **Security**
 - OAuth Support for Outbound Message Servers
 - 4096-bit Certificate Support for LDAP

Web Scheduler+



Web OMW: Table Operations



MS SQL Server Clustering



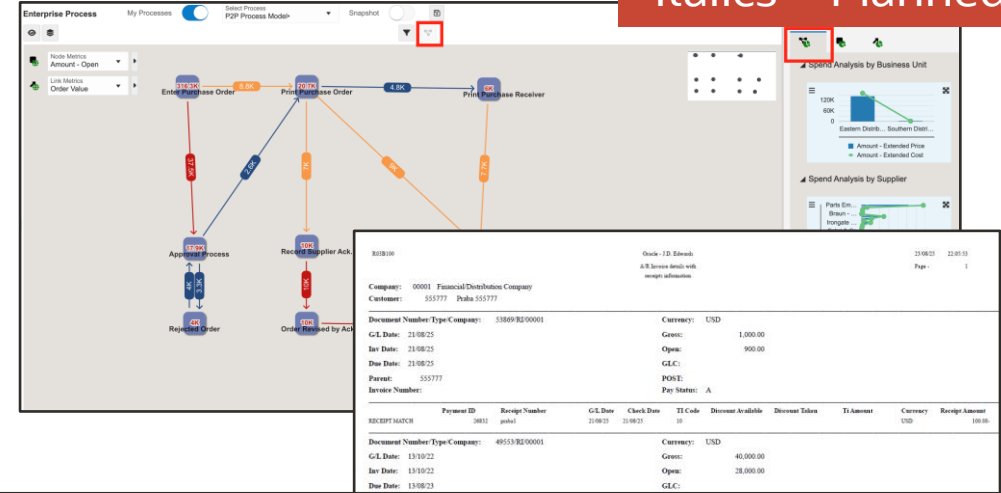
Applications

Release 26
Tools 9.2.26.0

Italics = Planned

Release 26 Creating your Digital Gold

- **Simplified User Experience**
 - Enhanced delegation process of Purchase Order Approval
 - *Ability to Retrieve Locations from RMA Defaults Table*
 - *Allow Complete Processing of Zero Commission Records*
- **Automate Business Processes**
 - Tolerance check in Partial Voucher Match
 - *Production Number Processing Enhancements*
 - *Ability to Set Printer Defaults Based on Ship To Address*
- **Enrich Feature Functionality**
 - Ability to Reprint Invoice for Held Orders
 - *Ability to schedule Preventive Maintenance based on user preferences*
 - *Enable Release Credit Holds (R42550) Program to Release Orders Regardless of Total Exposure*



Work With Approval Delegation

Original Approver: 9070144 Lingasamy, Dhanabal

Delegated Approver: [Empty]

Delegation Status: All Active Expired

Original Approver	Original Approver Name	Delegated Approver	Delegated Approver Name	Approval Route Code	Approver Type	Order Type	Effective Date	Expiration Date
<input checked="" type="checkbox"/>	9070144 Lingasamy, Dhanabal	<input checked="" type="checkbox"/>	9056166 Thomas, Jaya	BTR9	Budget	OP	09/18/2025	09/19/2025

Ability to Schedule Preventive Maintenance based on User Preferences

Equipment PM Schedule

Equipment Number: 3814

Service Type: 300-001

Schedule Interval: [Empty]

Service Hours: [Empty]

Service Miles: [Empty]

Service Fuel: [Empty]

Service Meter 4: [Empty]

Service Meter 5: [Empty]

Service Meter 6: [Empty]

Service Days: [Empty]

Frequency Indicator: A

Condition-Based Maintenance: [Empty]

Alert Level: [Empty]

Select User Define Code

Code	Description
<input checked="" type="radio"/>	No Frequency Indicator
<input type="radio"/>	1 Same Date Each Month
<input type="radio"/>	2 Last Date of Each Month
<input type="radio"/>	3 Same Date Each Quarter
<input type="radio"/>	4 Same Date Each Year
<input type="radio"/>	5 Same Day Each Week
<input type="radio"/>	6 Semi-Annually
<input type="radio"/>	A Daily
<input type="radio"/>	B Bi-monthly
<input type="radio"/>	C Semi-monthly (1st and 16th)
<input type="radio"/>	D Semi-monthly (15th and last)
<input type="radio"/>	E Tri-annually (every 4 months)
<input type="radio"/>	F Every 2 Years

Limitations:

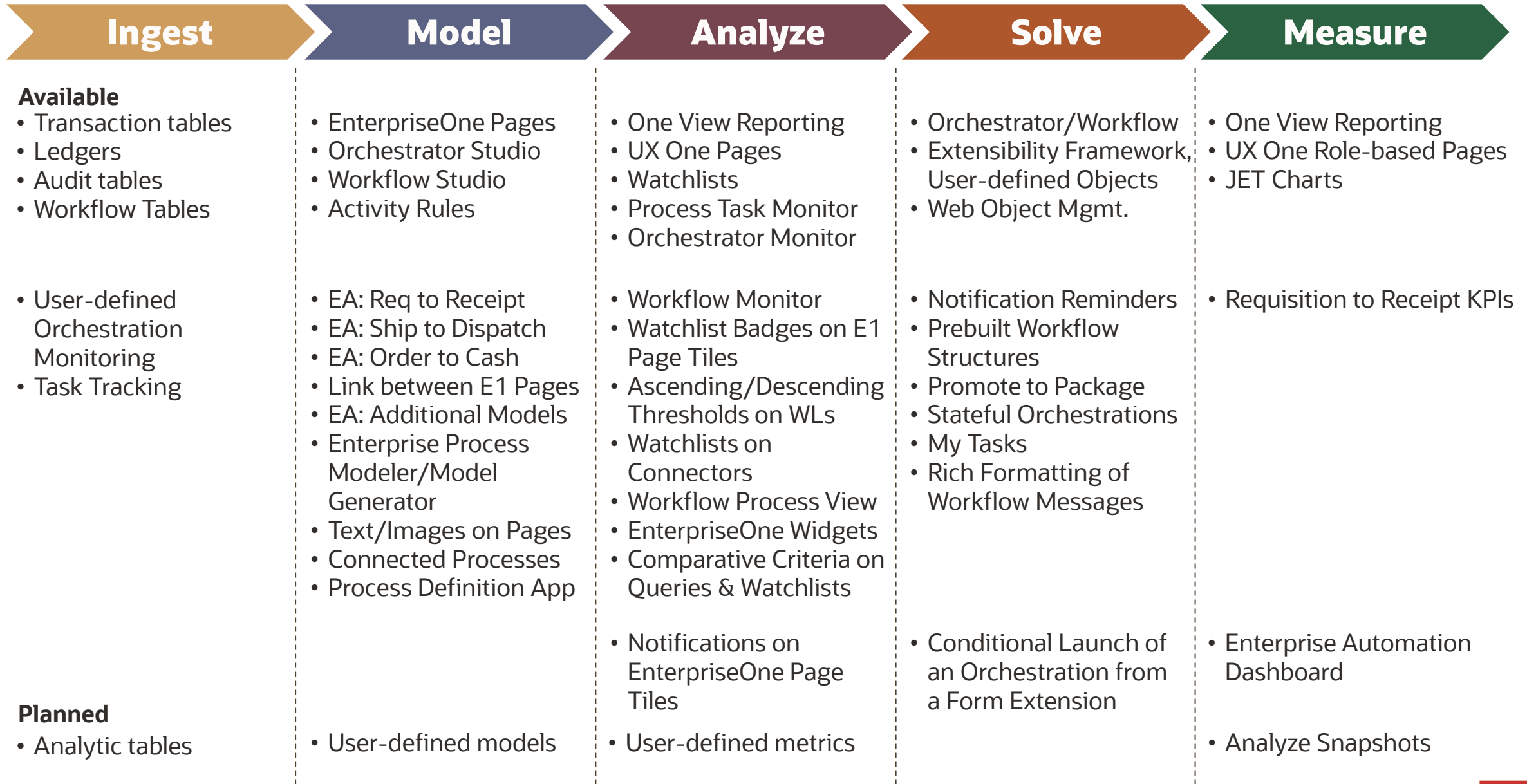
- Frequency at which the system schedules maintenance values are hardcoded
- Manual adjustments to work orders
- Increased administrative effort and potential for errors

Benefits:

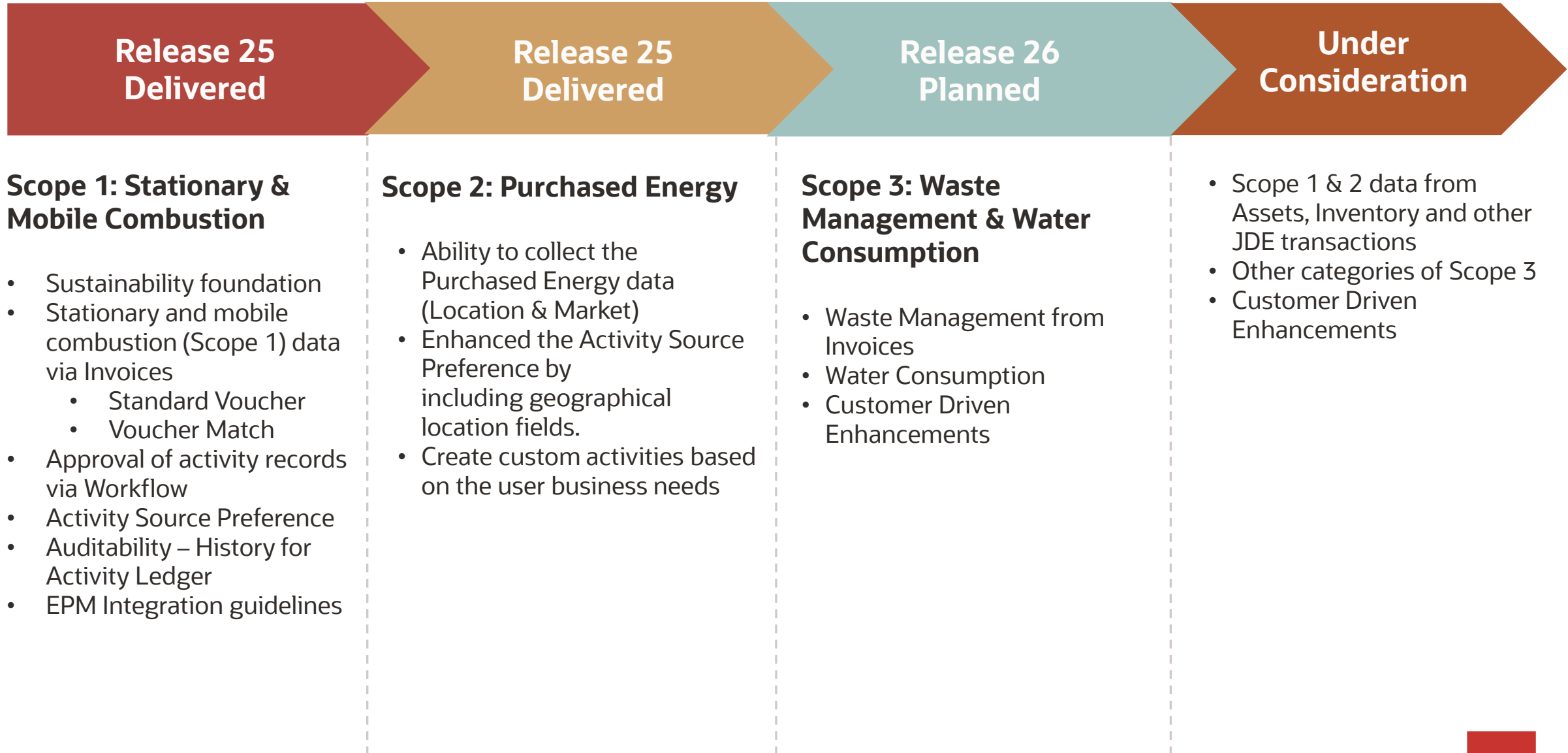
- **Tailored Scheduling**
Companies can create precise maintenance plans aligned with equipment usage patterns and seasonal demand.
- **Improved Asset Performance**
Maintenance is performed at optimal intervals, enhancing reliability and extending the lifespan of assets.
- **Increased Operational Efficiency**
User defined frequency intervals minimizes manual intervention and ensures timely maintenance execution.



JD Edwards Enterprise Automation – Roadmap



JD Edwards Sustainability Framework – Roadmap



AI Enablement with JD Edwards

Release 24 Delivered

- Authentication for Oracle Cloud Infrastructure Services through JD Edwards Orchestrator

Release 25 Delivered

- Example: Inspecting Components in JD Edwards using **OCI AI Vision**
- Example: Creating an Orchestration to Retrieve **OCI Usage Data**
- Example: Using **OCI AI Document Understanding** to Automate Invoice Processing in JD Edwards
- Example: Using **OCI AI Document Understanding** to Add Expenses to JD Edwards
- **Technical Brief:** Augmenting JD Edwards EnterpriseOne with Oracle Cloud Infrastructure Services
- **Business Brief:** Oracle Artificial Intelligence with Oracle JD Edwards EnterpriseOne
- **FAQ**

Release 26 Planned

- Example: Using **OCI Generative AI** to generate insights for data in EnterpriseOne Widgets
- Example: Using **OCI Language AI** for UDO String translations

Under Consideration

- Example: Using **Oracle AI Database 26ai AI Vector Search** for Media Object Search
- Example: Using **OCI Generative AI Agent and Oracle Machine Learning** for Item Base price determination
- Model Context Protocol
- OCI Agent Development Kit
- Multi Agent workflows
- Natural language querying with annotations in Oracle Database
- Oracle AI Data Platform
- AI in APEX
- JDE Security migration to Oracle DB
- JDE REST API Library

Future EnterpriseOne Enhancements

Highlights of Planned and Research Features

Planned

Applications

- Sustainability Framework: Capture Waste Management and Water Consumption Data
- Accurate Tolerance Check in Partial Voucher Match
- EU – Electronic Invoicing Invoice Enrichment (UBL 2.1 Extension)
- Brazil Tax Reform Changes
- EA: Enhanced Procure to Pay Process Model Template
- Maintain Agreement Relationship/Pricing with Future Committed Lines
- Ability to schedule Preventive Maintenance based on User preferences

Digital Platform

- Translatable Orchestration Input Labels
- Unique Shortcuts for Task Tracking Actions in Message Center
- Allowed Domains and Attributes for Content Security Policy
- Warning When Editing Shared Orchestrator Components
- Conditional Launch of an Orchestration, Notification, or Logic Extension from a Form Extension
- Enterprise Automation Workbench
- Notifications on EnterpriseOne Page Tiles
- Oracle Guided Learning for Orchestrator Studio

System Administration

- Microsoft SQL Server Clustering Support
- Web OMW: Table Operation Support
- Web Package Build: Quick Access to Log and Output Files
- Web Scheduler Application
- Translate Report Name Based on Language Preferences
- Development Client Installation via Server Manager
- UDO Tracking
- Security on Workflow Approval Link
- One-Click: Centralized Configuration Support

Research

Applications

- EA: Maintenance Work Order Process Model Template
- EA: Enhanced Order to Cash Process Model Template
- Sustainability Framework: Capture Scope 1 data from Assets
- Warehouse Replenishment Enhancements
- Manual Replenishment of Held Lots
- Optimize Preventive Maintenance Projection by including Preventive Maintenance Associations
- European Union – Payment Reconciliation (CAMT.053 Standard)

Digital Platform

- Default Values for Fields on Personal Forms
- Process Modeler: User-defined Models and Metrics
- Widgets on E1 Forms & in CafeOne
- Form Extensions and Personal Forms: Alignment of Controls
- Power Edit Form Extensions: Data Extensibility
- E1 Channel to ODA
- Monitor Orchestrator Queues
- Monitor/Debug E1 Resources from External REST API Calls

System Administration

- JDE Update Manager: Application Update Analyzer
- JDE Update Manager: Cross Reference & Decustomizer Recommendations
- UDO Compare Tool
- Session Failover for HTML Server on WLS Cluster
- JDE Oracle Analytic Accelerator
- OCI Adoption for Stack Monitoring & Log Analytics
- Batch Queue Manager
- Replace NSS/NSPR With OpenSSL For Secure LDAP
- One-Click: Adoption of Redwood theme

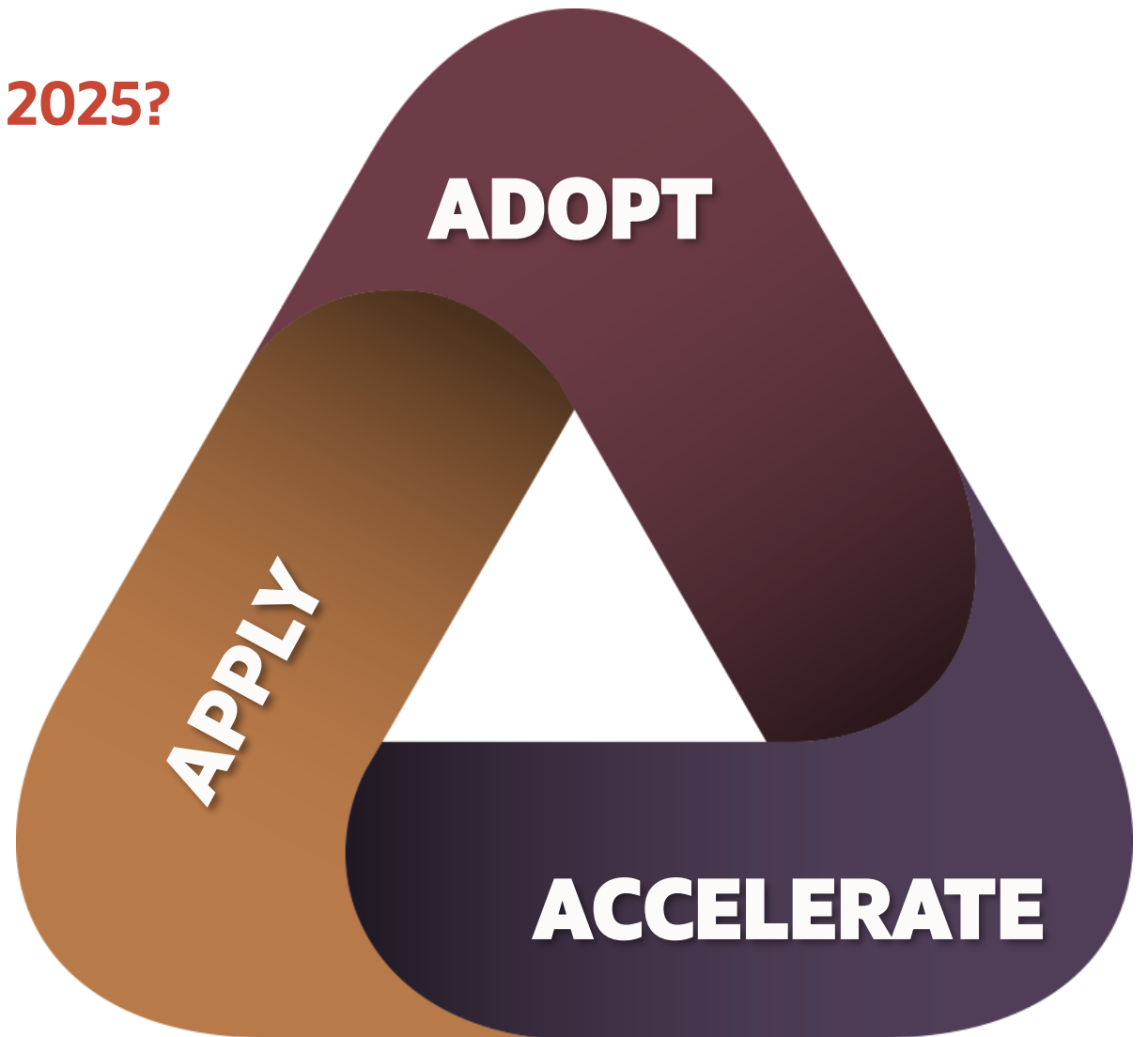
Continuous Evolution


Are you using JD Edwards like it's 2025?

Apply the latest JD Edwards release

Adopt new innovation at your pace

Accelerate your digital transformation with confidence





Announcing JD Edwards
EnterpriseOne
Release 26
October 2025



Save the Date
BLUEPRINT 4D
May 4 - May 7, 2026
Dallas TX | Hilton Anatole



Premier Support for
EnterpriseOne Extended through
at least
2036!

[Learn More](#)



Roadmap



Announcements



Product Catalog



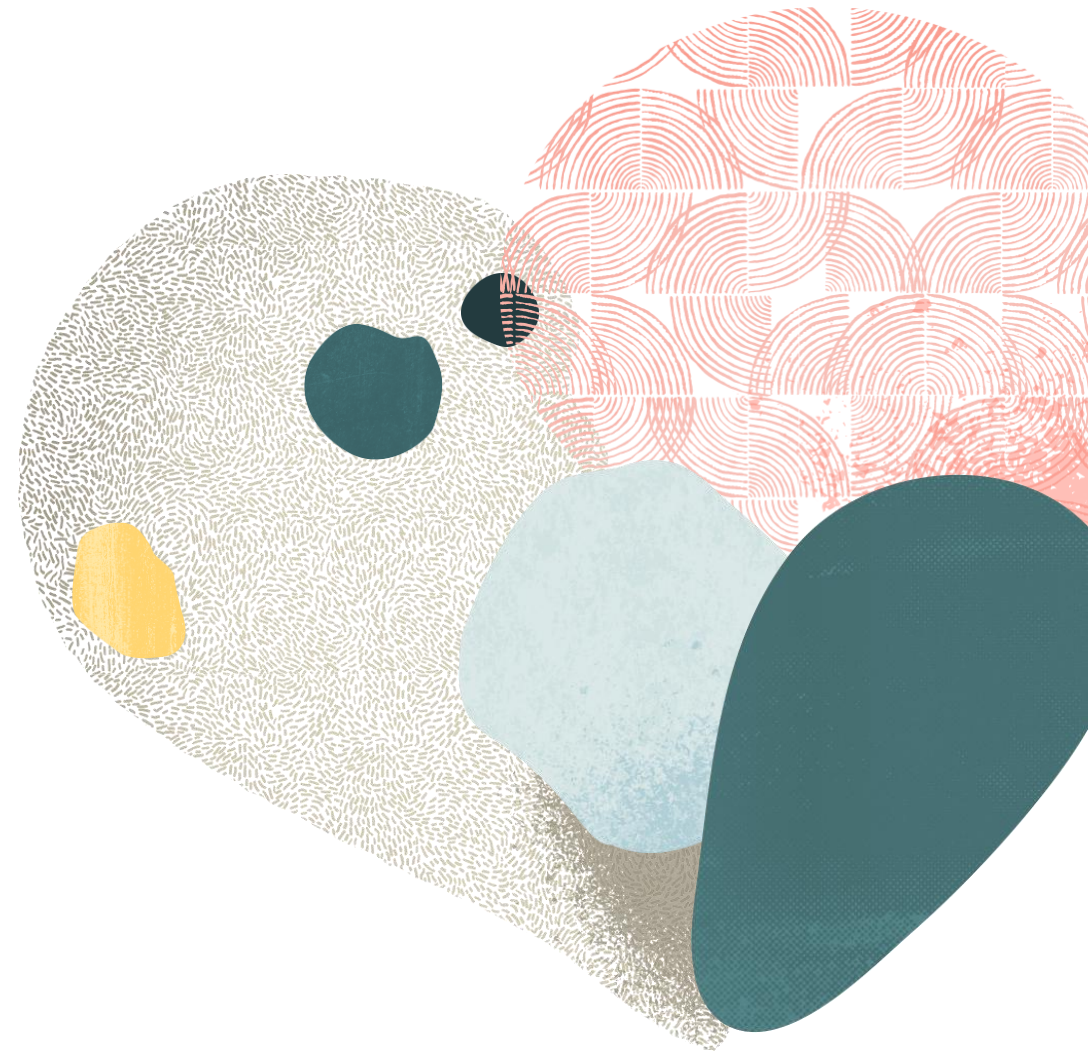
JDE and SaaS



JDE Documentation

Together, we will relentlessly
improve and **innovate**.

Together, we will **optimize** 
and **transform** how you use
Oracle applications and
technologies.



#JDERocks

